

HIE-ISOLDE HIGH BETA CAVITY STUDY AND MEASUREMENTS

A. D'Elia* and R. M. Jones, Cockroft Institute, UK, University of Manchester, Manchester, UK
 M. Pasini, CERN, Geneva, Switzerland
 and Instituut voor Kernfysica, K. U. Leuven, Leuven, Belgium

Abstract

The upgrade of the ISOLDE machine at CERN foresees a superconducting linac based on two gap independently phased Nb sputtered Quarter Wave Resonators (QWRs) working at 101.28MHz and producing an accelerating field of 6MV/m on axis. A careful study of the fields in the cavity has been carried out in order to pin down the crucial e-m parameters of the structure such as peak fields, quality factor and e-m power dissipated on the cavity wall. A tuning system with ≈ 200 kHz frequency range has been developed in order to cope with fabrication tolerances. In this paper we will report on the cavity simulations. The tuning plate design will be described. Finally the frequency measurements on a cavity prototype at room temperature will be presented.

INTRODUCTION

The upgrade of the ISOLDE machine will consist in boosting the energy of the beam from 3MeV/u up to 10 MeV/u with beams of mass-to-charge ratio of $2.5 \leq A/q \leq 4.5$ and in replacing part of the existing normal conducting linac [1].

The new accelerator will employ superconducting QWR's based on Nb sputtered on Cu substrate technology [2] with a working frequency of 101.28MHz and with a nominal accelerating field of 6MV/m on beam axis.

Two cavity geometries, *low* and *high* β , will be used to cover the whole energy range. As the first part of the upgrade will consist in the realization of the high energy section, the R&D effort have been focused on the study and production of a prototype of the *high* β cavity.

The electromagnetic study and realization of the cavity prototype has been carried out in different steps. The definition of the cavity main parameters derives directly from beam dynamics studies (beam aperture, gap to gap distance, RF field asymmetry) [3], from the upstream linac (RF frequency) and from manufacturing technique (Nb sputtering). Given the above constraints, the electromagnetic study has been performed in order to minimize the surface peak electric and magnetic field, maximizing the R_{sh}/Q and the g factor. In addition a particular attention has been paid to the study of the frequency sensitivity of the different geometric parameters, in order to evaluate a suitable tuning range. During the fabrication of the cavity prototype, after each significant step (machining, welding, deep

pressing) an RF measurement has been performed and results are reported after in the paper. Given the limited frequency range of the tuner, the final dimension of the external conductor has been set only after the final frequency measurement.

Figure 1 shows the prototype built at CERN and, presently, under sputtering tests.

In the following we will show the main electromagnetic parameters for the optimized geometry of the cavity and we will compare them to the ones of similar structures as in TRIUMF and SPIRAL2. The tuner system will be presented. Finally the results of the frequency tests at room temperature at different steps of the machining will be reported.



(a) the cavity during the cleaning process (b) internal view of the cavity

Figure 1: The prototype of the high β cavity produced at CERN.

ELECTROMAGNETIC SIMULATIONS

The electromagnetic design of the cavity aims to minimize the surface peak fields, both electric and magnetic. As mentioned above the geometry has also been optimized for the sputtering process [2].

In particular beam ports on the external conductor have been shaped in order to avoid any hidden edges on surface to the Nb cathode. Similarly, the region of the maximum magnetic field has been rounded in order to have a better homogeneity of the Nb film and this shape gives also a regular surface current paths minimizing the magnetic fields on these positions.

The electric peak field, located at the bottom part of the resonator antenna, can be varied by changing the distance

*Alessandro.Delia@cern.ch

of the bottom part of the antenna from the bottom plate of the cavity (tipgap). The tipgap has been chosen of 70mm but the cavity, at the beginning, has been manufactured with a tipgap of 90mm. This gives the opportunity of tune up the frequency at the end of the machining procedures if needed. The simulations presented in the following have been carried out with the nominal value of 70mm. Figure 2 shows a cut-view of the CAD model and the positions of the maximum electric and magnetic field.

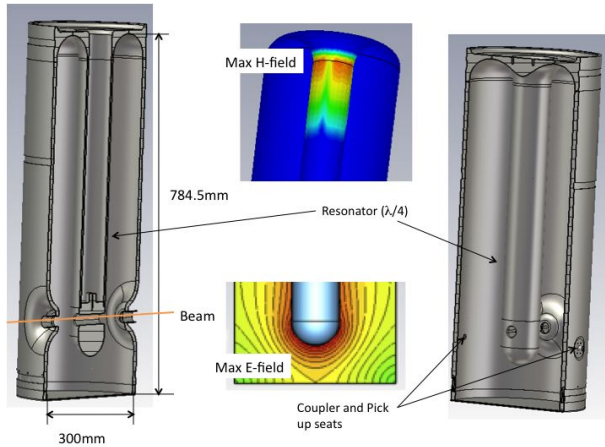


Figure 2: Cut-view of the cavity showing the internal geometry and also coupler and pick-up seats; in the middle, the regions of the maximum electric and magnetic fields are shown.

Because of the cavity geometry is not azimuthal symmetric, 3D electromagnetic codes need to be used to evaluate its RF properties. In order to pin down reliable results, a *calibration* of the simulation tools have been performed. A simpler geometry without beam ports has been designed in order to get a comparison between Ansoft HFSS© [5], CST Microwave© [6] and POISSON SUPERFISH (Fig. 3). For this kind of structures, we consider the data from SUPERFISH as the reference one.

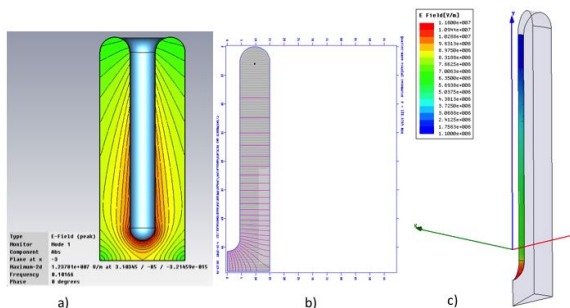


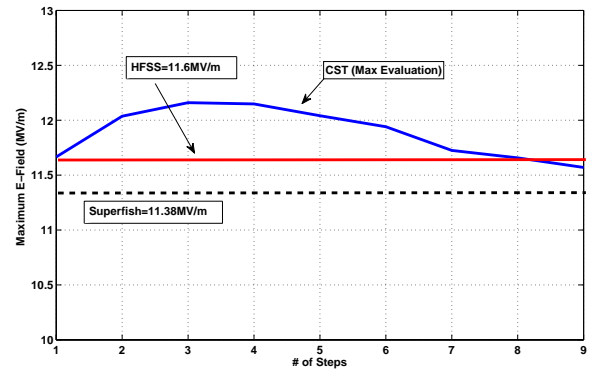
Figure 3: Models used for simulations: a) MWS, b) SUPERFISH, c) HFSS.

Considering the azimuthal symmetry of this simpler structure, only one quarter has been simulated in CST and the mesh refinement has been used. The higher step in the refinement corresponds to about 1.000.000 of meshcells.

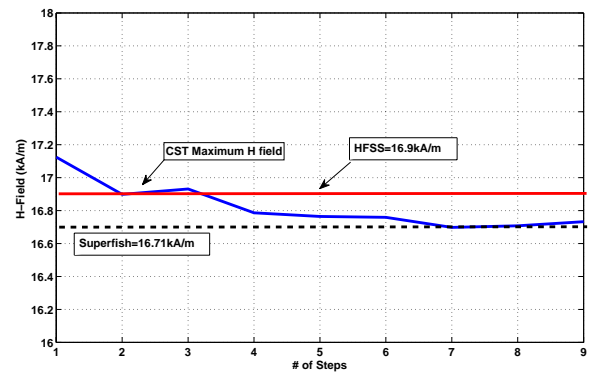
07 Cavity design

In HFSS, only a slice of one sixteenth has been simulated. The results have been obtained by considering a surface refinement of the meshes of 2μm, the total number of tetrahedra is about 110.000. The mesh stepsize for SUPERFISH is of 2.5mm (finer meshing does not change the results).

The comparison terms have been the maximum electric and magnetic field and the Q_0 . The results for peak fields are shown in Fig. 4.



(a) Max E-field



(b) Max H-field

Figure 4: Peak surface fields.

The fields are normalized to give 1J stored energy in the cavity (CST normalization). The plots show consistent results between the three codes. A summary of the results, included Q_0 values are listed in Table 1.

When the beam ports are added to the structure, the results are expected to stay consistent with the ones found previously. For this structure, Superfish is no longer possible to use and then the results are extracted only from HFSS and CST. Actually E_{peak} and H_{peak} are consistent between HFSS and CST and also with the previous plots, but the value of Q_0 found by CST is overestimated, about 14000, and not consistent with the HFSS simulations, about 11700. Probably this is due to some geometry problem in the CST model around the noses. In fact, when the racetrack shape of the noses is changed to a simpler circular geometry, the value becomes compatible with other simulations.

Table 1: Comparison table.

	Superfish	CST	HFSS	CST – SF %	HFSS – SF %
Frequency (MHz)	101.674	101.666		101.674	-
H_{peak} (kA/m)	16.711	16.733		16.763	0.1
E_{peak} (MV/m)	11.38	11.57		11.6	1.7
Q_0	11795	11844		11746	0.4

Finally, the electromagnetic cavity parameters are shown in Table 2 in comparison with TRIUMF and SPIRAL2.

Table 2: Cavity parameters in comparison with TRIUMF and SPIRAL2.

	ISOLDE	TRIUMF	SPIRAL2
Frequency (MHz)	101.28	141.4	88
β (%)	11.4	11.2	12
E_{acc} (MV/m)	6	6	6.5
L_{norm} (mm)	300	180	410
$E_{\text{peak}}/E_{\text{acc}}$	5.4	4.9	4.9
$B_{\text{peak}}/E_{\text{acc}}$ [G/(MV/m)]	96	99	90
R_{sh}/Q_0 (Ω)	554	545	518
$g=R_s \cdot Q_0$ (Ω)	30.34	25.6	37.5
P_{cav} (W)	7	7 ^a	10 ^b

^aMeasurements on a cavity prototype showed results exceeding the design parameters: $Q_0=7 \cdot 10^8$ for $E_{\text{acc}}=8.5\text{MV/m}$ with $P_{\text{cav}}=7\text{W}$ [7].

^bMeasurements on a cavity prototype showed: $Q_0=10^9$ for $E_{\text{acc}}=6.5\text{MV/m}$ with $P_{\text{cav}}=10\text{W}$ [8].

THE TUNER PLATE

For the tuning system it has been decided to follow the concept that has been developed at TRIUMF [9]. An *oil-can* shaped diaphragm of CuBe has been hydroformed with a pressure up to 120 bar. All radial slots necessary for the elongation and contraction of the diaphragm are performed with a laser beam. The same plate can be mounted directly on the low β cavity or welded to a flange in the case of the high β cavity. The actuator is designed to have no backlash. A pictorial view of the tuner is presented in Fig. 5.

The useful stroke of the tuner plate is of 20mm. From the *manufacturing* position the plate can be pushed up towards the central resonator of 5mm (position +5) and down, in the other direction, of 15mm (position -15). In Table 3 the results of the simulations are listed for the nominal value of the tipgap of 70mm and for a tipgap of 90mm.

The coarse range of the tuner plate for tipgap=70mm is foreseen to be of 245kHz for a moveable range of 20mm giving an average $\Delta_{\text{tunerplate}} \approx 12.25\text{kHz/mm}$. The value for tipgap=90mm is of 5.2kHz/mm and the correction is less efficient as expected (coarse range of only 140kHz). However, both coarse ranges largely cope with frequency detuning coming from machining errors, listed in Table 4,

07 Cavity design

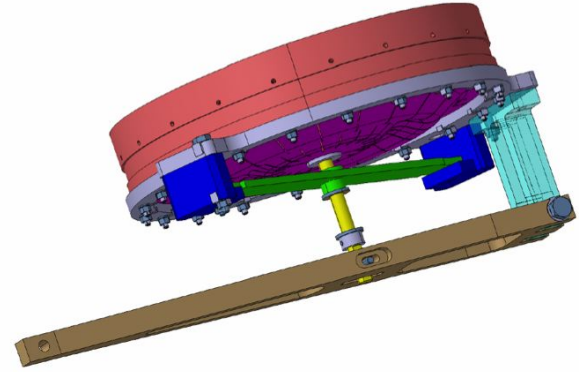


Figure 5: Tuner plate with its actuator.

Table 3: Simulated frequency values of the tuning plate when all up (Position +5) or all down (Position -15); in yellow the values for the nominal tipgap value.

	Tipgap 70mm	Tipgap 90mm
Position +5	100.684 MHz	101.235 MHz
Position -15	100.929 MHz	101.339 MHz
$\Delta_{\text{tuner plate}}$	12.25 kHz/mm	5.2 kHz/mm

considering that mechanical tolerances are in the order of the tenth of mm.

Table 4: Simulations results of the frequency detuning due to the main possible machining errors.

Type of error	Δ_{freq} (kHz/mm)
Cavity diameter	≈ 65
Resonator length	≈ 160
Nose length	≈ 50

Another important aspect to take into account is the radiation pressure acting on the tuner plate. Because of the high number of cuts and the reduced thickness of the diaphragm, a strong force could irreversibly modify the tuner shape leading to an unrecoverable frequency shift. The radiation pressure can be calculated by evaluating both electric and magnetic field on the plate surface by the following

equation:

$$P = \frac{1}{4} (\mu_0 |\mathbf{H}|^2 - \epsilon_0 |\mathbf{E}|^2)$$

The result is shown in Fig. 6 in the case of a flat plate: the total force is quite low, equal to -1.77N.

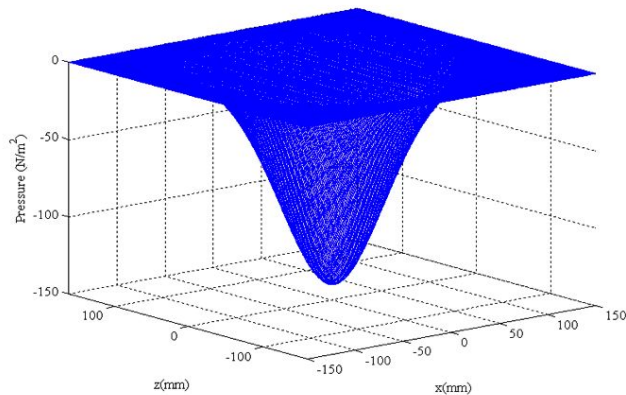


Figure 6: Radiation pressure on a flat plate.

FREQUENCY MEASUREMENTS

The working frequency of the cold cavity has to be 101.28MHz. Taking into account the scaling factors due to the superconducting mode of operation (shortening of the length of the central resonator, skin depth variation, etc...) and due to the vacuum-air environment change, the *hot* frequency at room temperature in air should be $\approx 100.900\text{MHz}$.

As described before we have left the value of the tipgap as a *free* parameter in order to compensate possible errors coming from the machining process. During the welding of the top part of the cavity, a problem occurred and the result has been a change of the length of the internal conductor, which is now shorter of 0.4mm, with a foreseen increase of the frequency of about 65kHz. The measured variation is of 77kHz. Table 5 shows the measured values before and after welding the inner conductor to the outer. It is also shown the value of Q_0 which is significantly improved after welding as expected. Furthermore the measured value is consistent with simulations giving a value of about 11700.

Table 5: Measurements before and after welding the inner conductor to the outer with tipgap=90mm.

	Before welding	After welding
Frequency	101.147	101.224
Q_0	5908	11380

The last step is to finally define the length of the outer conductor. An intermediate cut of 75mm has been performed and the subsequent frequency measurement confirmed the final cut position as from design value. The re-

07 Cavity design

sults are shown in Table 6: the values both of the simulations and of the measurements have been properly scaled (values in bold) to get a comparison. The effect of the shorter central conductor can be accepted and the cut has been done at the nominal tipgap length of 70mm.

Table 6: Set of measurements for different cut of the tipgap and different coupler insertion; bold values are scaled to get a comparison.

Coupler in=64mm and Pickup in=22mm		
Tipgap 90	Simulation	Measurement
	101.233MHz (-32kHz air) 101.201MHz	101.246MHz (-77kHz res) 101.169MHz
Tipgap 75	Simulation	Measurement
	101.013MHz (-32kHz air) 100.981MHz	101.000MHz (-77kHz res) 100.923MHz
Tipgap 70	Simulation	Measurement
	100.899MHz (-32kHz air) 100.867MHz	100.916MHz (-77kHz res) 100.839MHz
Coupler in=22mm and Pickup in=22mm		
Tipgap 90	Simulation	Measurement
	101.410MHz (-32kHz air) 101.378MHz	101.483MHz (-77kHz res) 101.406MHz
Tipgap 75	Simulation	Measurement
	101.191MHz (-32kHz air) 101.159MHz	101.240MHz (-77kHz res) 101.163MHz
Tipgap 70	Simulation	Measurement
	101.083MHz (-32kHz air) 101.051MHz	101.150MHz (-77kHz res) 101.073MHz

Finally the measurement with the tuning plate has been done. The value is shown in Table 7 in comparison with simulation results opportunely scaled and goal frequency and all the values are fully compatible.

Table 7: Frequency measurement at room temperature with tuner plate in rest position.

Measured frequency	100.885 MHz
Simulation	100.816 MHz (-32kHz air) (+77kHz res) 100.861MHz
Goal frequency	$\approx 100.900\text{ MHz}$

CONCLUSION

The high β cavity for ISOLDE upgrade has been fully designed and built. The cavity parameters have been derived showing values comparable to other similar structures (TRIUMF and SPIRAL2). The foreseen Q_0 should

be $6.6 \cdot 10^8$ with a surface resistance $R_s=46n\Omega$ giving a power dissipation on the cavity wall of 7W.

A prototype tuner plate has been built. The total coarse range in simulation is of 245kHz for a stroke of 20mm giving 12.25kHz/mm.

The frequency measurements at room temperature show a perfect agreement with the designed frequency: the measured frequency is 100.885MHz, the design frequency at room temperature should be ≈ 100.900 MHz (the simulations give 100.861MHz).

Presently the cavity and the tuner plate are under sputtering tests.

ACKNOWLEDGEMENTS

The authors wish to acknowledge the Cockcroft Institute for supporting this project. We are thankful to Philippe Perret who took charge of the mechanical design of the tuning plate.

REFERENCES

- [1] M. Pasini "HIE-Isolde: The Superconducting RIB Linac at CERN", these proceedings.
- [2] G. Lanza et al., "The HIE-ISOLDE Superconducting Cavities: Surface Treatment and Niobium Thin Film Coating", these proceedings.
- [3] M. A. Fraser et al., "Compensation of Transverse Field Asymmetry in the High-Beta Quarter-Wave Resonator of the Hie-Isolde Linac at CERN", these proceedings.
- [4] S. Calatroni et al., "The HIE-ISOLDE Superconducting Cavities: Mechanical Design and Fabrication", these proceedings.
- [5] <http://www.ansoft.com/products/hf/hfss/>
- [6] www.cst.com/
- [7] V. Zvyagintsev et al., "Development, Production And Tests Of Prototype Superconducting Cavities For The High Beta Section Of The Isac-ii Heavy Ion Accelerator At Triumf", RuPAC 2008, Zvenigorod, Russia.
- [8] G. Olry et al., "Tests Results Of The Beta 0.12 Quarter Wave Resonators For The Spiral2 Superconducting Linac", LINAC 2006, Knoxville, Tennessee USA
- [9] T. Ries et al., "A mechanical Tuner for the ISAC-II Quarter Wave Superconducting Cavities", PAC03, Portland, USA, May 2003.