

- VME 64x System using GE VMIVME-7050 and Motorola MV5500.
- PLC system: Yokogawa FM3, SIEMENS S300.
- Serial port server MOXA NPort-5620.
- The embedded controller: digital power supply controller
- VME-EVG-230, VME-EVR-230, EVR-TTB-200, EVR-OTB-200

Table 1: IOC List

System	Device	IOC	PV
Power supply	800	26	29610
Vaccum system	730	25	29200
MPS system	25	3	1000
Timing system	16	16	540

Table 1 show the IOC and PVs of main sub system. Include hard IOC(VME) and soft IOC(), Have tested all of hardware such as VME system, PLC, Serial port server and have prepared, done all related EPICS driver testing

Software system

The SSRF control system running on EPICS base 3.14.8.2, at OPI, EDM and some strip by Python was used in OPI. For high level physics application

Data archive system use RDBMS for data storage and data management. We using the distribute archive engine. See Fig 5. The archive engine using XML engine configure and native XML data type of database withXML schema. The engine run on Linux Fedora 7 with distributed form (multi-engine). Database connected by ODBC, on our case we use Free TDS 0.63. All the data can be access by the Web Service data access interface (Fig. 2). This platform independent data analyse interface can be called by windows client, LINUX client, Matlab and strip like python. Now it was already done and in testing process.

Centre database system

SSRF use centre database to store the machine parameters and reference information for all stage of machine simulation and running. The database system support access and set various accelerator run time configure parameters, failure report and invalid record of all system. It also store data of accelerator on time using channel archive system, also can be used for analysis by users. The centre database system integrate with uniform authentication system, uniform database access rule and data integrity. Remote access from Internet and web based database access also could be applied. The hardware platform using SAN & database server cluster. Now we have tested on the MS SQL Server 2005 and will transfer to Oracle 10g with RAC later.

DEVICE CONTROL

Most of device control system was finished installation and online test, include power supplies control, vacuum system, injection/extraction system, timing and MPS system. Something like insertion device control is in process.

Digital power supply control

There are over 800 magnet power supplies (PS) in the Storage Ring, Booster, Linac and Transport Lines. For the requirement of control precision, reliability and stability of the magnet power supplies, digital PS control system was used. The typical resolution reaches 1ppm to 10ppm with long term stability, reproducibility is better than 30ppm. There are two kind of digital control card s, the PSI Digital power supply controller and designed digital power supply controller in house. Each PS has a local digital controller and a optical link. The VME-based front-end consists of a Single Board Computer, IP carriers and Industry Pack (IP) I/O modules. A Prototype has being developed and the software and hardware solutions have been tested. Basic functions, including waveform (using internal trigger), have been tested.

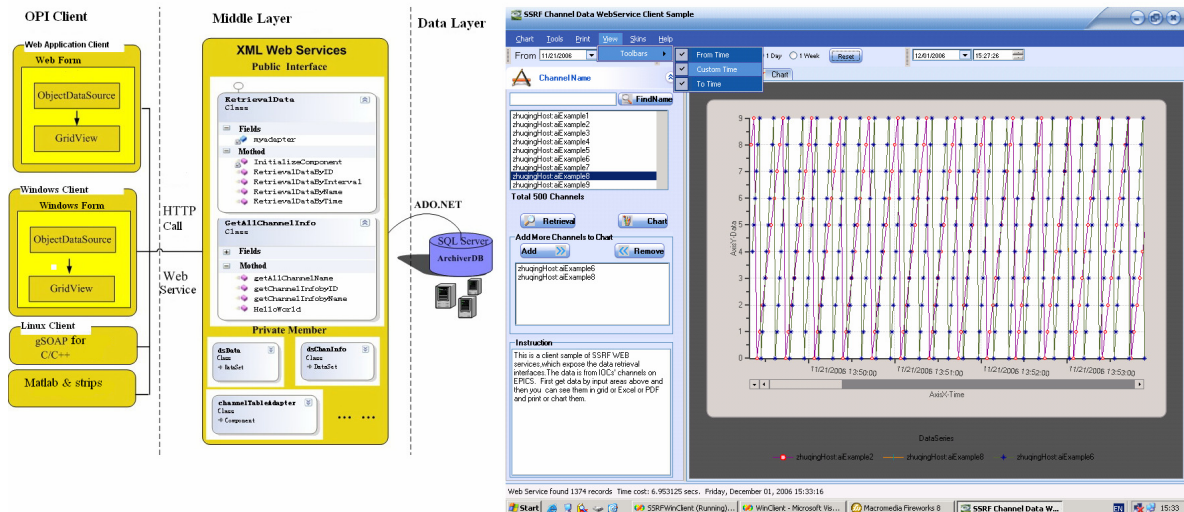


Figure 2: Archive data analysis system based on web service.

Vacuum control system

There are above 730 vacuum device installed at the whole machine. VARIAN Multi Gauge, JJJvac Sputter Ion Pump Power Supply, Vacuum Valve, RGA (Residual Gas Analyzer), except Vacuum Valve, all of these device are serial port based, the MOXA serial to Ethernet translate be used for serial device and using Soft IOC. All of the vacuum device data can refresh at 10Hz rate.

Timing system

Adopt the New event timing system refer to APS event system, SLS and Diamond timing system. Advantage of new timing system

- Structure is simple used broadcasting method
- Low Jitter with distributed RF clock
- It can be run on the EPCIS environment
- Easy to extend

Now this system integrated with EPICS base 3.14.8.2 is running well for Linac and Booster. The figure 3 show the timing distributed structure. Timing triggers have been success used for Gun of LINAC, kickers and septum of Booster with low jitter and precise control.

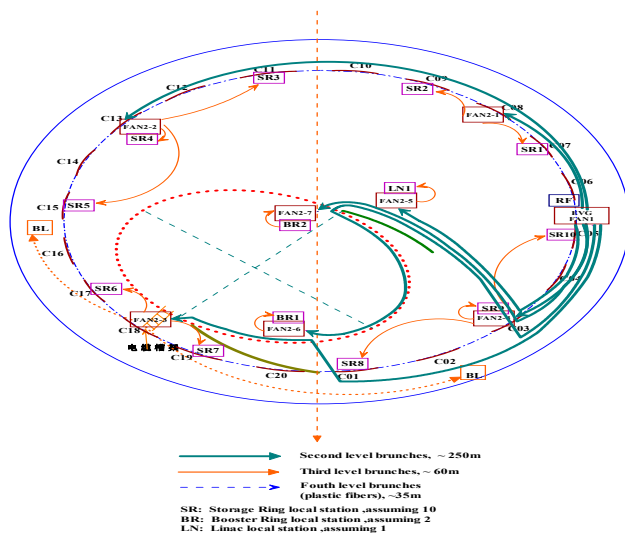


Figure 3: Timing system lay out.

MPS system

SSRF MPS system implement with a PLC system that composed with 25 sets of Yokogawa FM3 PLC. In order to ensure the reliability of MPS system, all the interlock logic run at PLC layer and integrated EPICS for monitor and event record using NetDev by KEKB. The whole system has 4 layers: Accelerator system layer interlock, Sub collectivity layer interlock. The MPS interlock logic is finished designed and now the MPS system is running at Linac and Booster.

OPI system

SSRF use EDM for the machine operator and use Matlab version 2007a, Accelerator Toolbox (AT) & middle layer AT for high level physics application. As descript in the section of environment, all the OPI run on

the ILINUXFedora 7. The EDM file store on NFS file server and all the client can access it by a start stript. Fig. 4 show some OPI panel of SSRF control system.



Figure 4: OPI panel of Linac control system.

CONCLUSION

Set up a distributed controls system based on EPICS. Almost device control system had finished system construct, include install, online testing and software development. The LINAC control system already run 5 months already, Booster control system are used for commissioning Booster now. The control of Storage Ring was under construction. High level physics application and OPI panel can run normally. To end of this year, the control system will launch into the machine commissioning. In general, most function of control have been reached on design goal, the detailed specification are testing.

ACKNOWLEDGMENT

Authors would like to thanks those who supported us designing and constructing SSRF control system. We also want to thank EPICS collaborators for their kind supports.

REFERENCES

- [1] SSRF Design Report, SINAP-Report/2004
- [2] <http://www.ssr.ac.cn>
- [3] <http://www.aps.anl.gov/epics/>
- [4] J. Chiba, K. Furukawa, et al., "Present status of the J-PARC Control System", Proc. ICALEPCS2003, Gyeongju, Korea
- [5] J. Odagiri, et al., "EPICS Devices/Driver Support Modules for Network-based Intelligent Controllers", Proc. ICALEPCS 2003, pp. 494-496A.N.