

# TUPV048


## UPDATES AND REMOTE CHALLENGES FOR IBEX, BEAMLINE CONTROL AT THE ISIS PULSED NEUTRON AND MUON SOURCE




F. A. Akeroyd, K. V. L. Baker, L. Cole, J. R. Harper, D. Keymer, J. C. King, T. Lohnert, A. J. Long, C. Moreton-Smith, D. Oram, B. Rai  
 Science and Technology Facilities Council, Rutherford Appleton Laboratory, UK

### What is IBEX?

- Client-server experiment control system
- EPICS (server), Eclipse/RCP/CS Studio (GUI)
- Running on 2/3 of instruments at ISIS
- Includes script generator (see TUPV049)
- Additional view for reflectometry instruments
- A *manager mode* can restrict user operations



IBEX Main GUI




IBEX Reflectometry View

### IBEX Testing

- Emulators written for devices
  - Using LeWIS package
- EPICS IOCs tested against emulators
- GUI tested using Squish


### Remote Experiment Access

- COVID-19 affected users' ability to visit the facility
- Requirements gathered, both read/monitor and full access required



### Read / Monitor Access

- IBEX client on Linux cloud analysis system (IDAaaS)
- Enhanced web dashboard to graph historical data values



IBEX Web Dashboard




Plot of single value from dashboard

### Full Remote Experiment Access

- Provided by RealVNC cloud connectivity solution
- Dedicated instrument computers for access
- Required 2FA, access only for duration of experiment

### Building and Deploying Systems

- Re-deploy operating system and applications
- Scripted, version controlled, repeatable operation
- Use virtual machines and Virtual Hard Disks (VHDs)

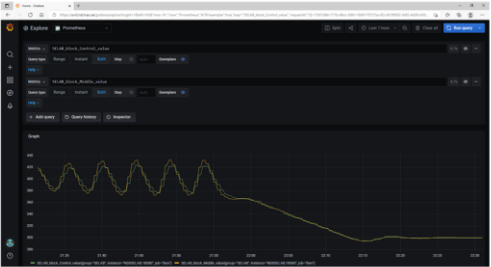



```

            graph TD
                W10[Windows 10 OS image] --> MDT
                MSI[Installer MSI based application packages] --> MDT
                MDT --> DNS[Deployment network share]
                MDT --> ISO[ISO Boot File]
                IBXB[IBEX Server Build] --> VAR[VAR VHD]
                IBXG[IBEX GUI Build] --> SET[SETTINGS VHD]
                NZIP[Non-installer ZIP based application packages] --> APPS[APPS VHD]
                SCRATCH[SCRATCH VHD] --> APPS
                VAR --> IVM[Instrument Virtual Machine]
                SET --> IVM
                APPS --> IVM
                SCRATCH --> IVM
                OSV[OS VHD] --> IVM
                IVM --> IVM_ACTIONS[Attach VHDs, Boots from ISO, Installs OS from network]
                IVM_ACTIONS -.-> DNS
                IVM_ACTIONS -.-> ISO
                
```

### Remote Monitoring Via Web

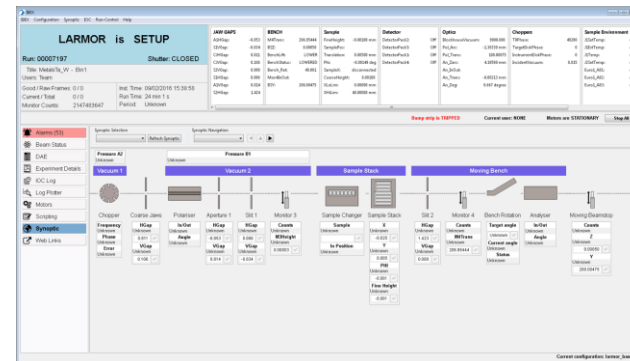
Uses Grafana, with the Prometheus monitoring tool as data source



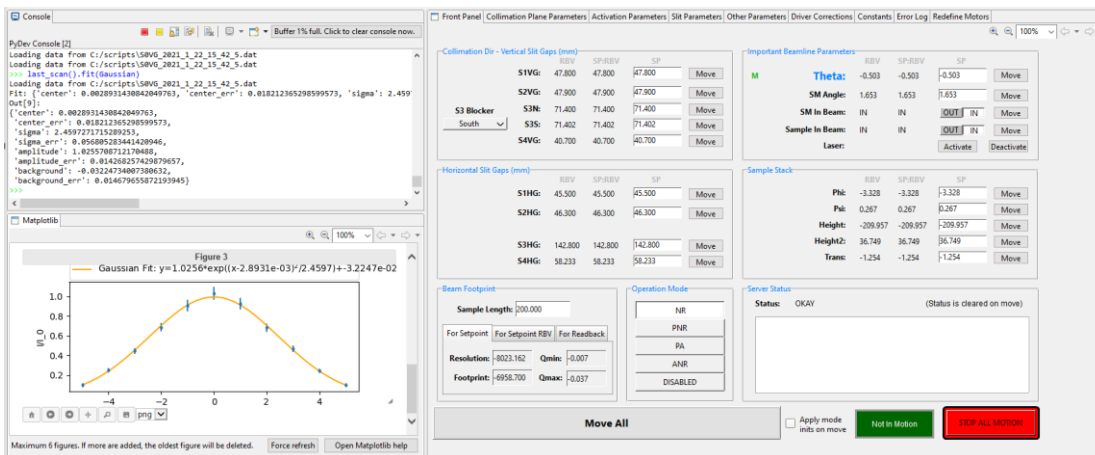
Grafana explorer view, which integrates well with Prometheus

# What is IBEX?

- Client-server experiment control system
- EPICS (server), Eclipse/RCP/CS Studio (GUI)
- Running on 2/3 of instruments at ISIS
- Includes script generator (see TUPV049)
- Additional view for reflectometry instruments
- *A manager mode* can restrict user operations



IBEX Main GUI



IBEX Reflectometry View

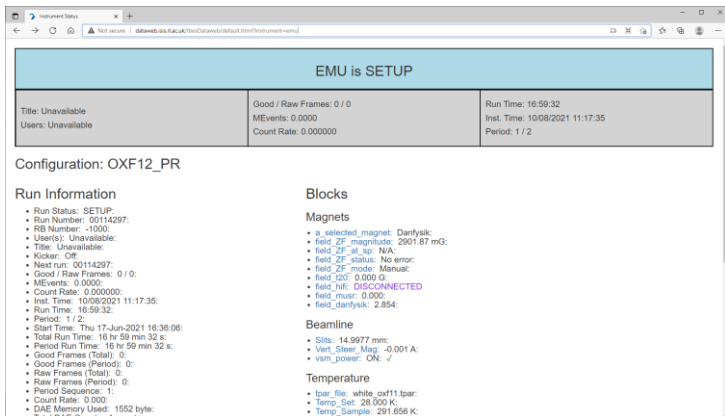
## IBEX Testing

- Emulators written for devices
- Using LeWIS package
- EPICS IOCs tested against emulators
- GUI tested using Squish

# Remote Experiment Access



- COVID-19 affected users' ability to visit the facility
- Requirements gathered, both read/monitor and full access required



IBEX Web Dashboard

## Read / Monitor Access

- IBEX client on Linux cloud analysis system (IDAaaS)
- Enhanced web dashboard to graph historical data values



Plot of single value from dashboard

## Full Remote Experiment Access

- Provided by RealVNC cloud connectivity solution
- Dedicated instrument computers for access
- Required 2FA, access only for duration of experiment





## Building and Deploying Systems

- Re-deploy operating system and applications
- Scripted, version controlled, repeatable operation
- Use virtual machines and Virtual Hard Disks (VHDs)

